

# Spare Parts List for Type 3271 (1400-250 cm<sup>2</sup>)



## Your contact details:

Title:

Name:

Company:

Customer no.

Street:

ZIP/postal code, city:

Country:

E-mail:

Phone:

## Ordering spare parts

The spare parts for Type 3271 are listed on the next pages. This document can also be used for ordering:

1. Fill in your contact data and information on the product.
2. Enter the quantity of spare parts needed.
3. Click [Send form] button to attach the PDF form to an e-mail.
4. Attach additional information (e.g. invoice, photos) to the e-mail, if necessary.
5. Send e-mail to spareparts-de@samsongroup.com.

Either

Configuration ID (Var-ID):

or

SAMSON order no.:

Position in order:

or specifications on the nameplate

(description of the currently valid nameplate ► EB 8310-8)

Type number	3271	Fail-safe action
Country of origin		Manual operation
Serial number		Diaphragm material
Actuator area	1400-250 cm <sup>2</sup>	Connecting thread
Bench range in bar and psi		Date of manufacture
Operating travel in mm		Operating medium
Operating range in bar and psi		
Permissible supply pressure p <sub>max</sub> in bar or psi		

Send form

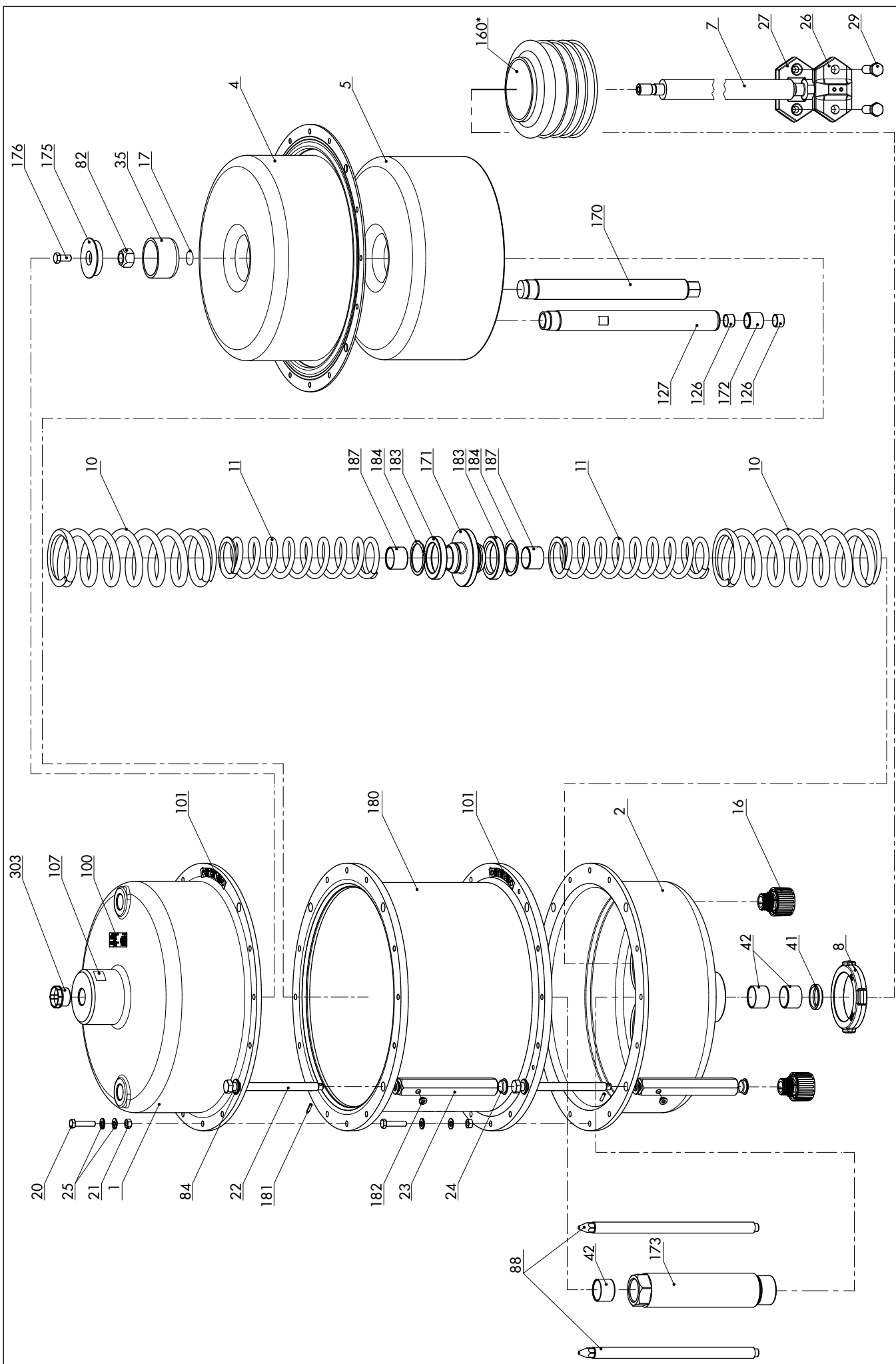
Print form

Clear form

Edition August 2020

Spare Parts List

EL 8310-8 EN



Spare part no.	Qty.	Filled in by SAMSON: material no.
1		
2		
<b>4</b>		
5		
7		
8		
10		
11		
<b>16</b>		
<b>17</b>		
18		
20		
21		
22		
23		
24		
25		
26		
27		
29		
<b>35</b>		
<b>41</b>		
<b>42</b>		
82		
84		
88		
100		
101		
107		
121		
126		
127		
<b>160*</b>		
170		
171		

Spare part no.	Qty.	Filled in by SAMSON: material no.
172		
173		
174		
175		
176		
180		
181		
182		
183		
184		
303		

1) "Stem retracts" direction of action only

2) "Stem extends" direction of action only

Specifications subject to change without notice

---